



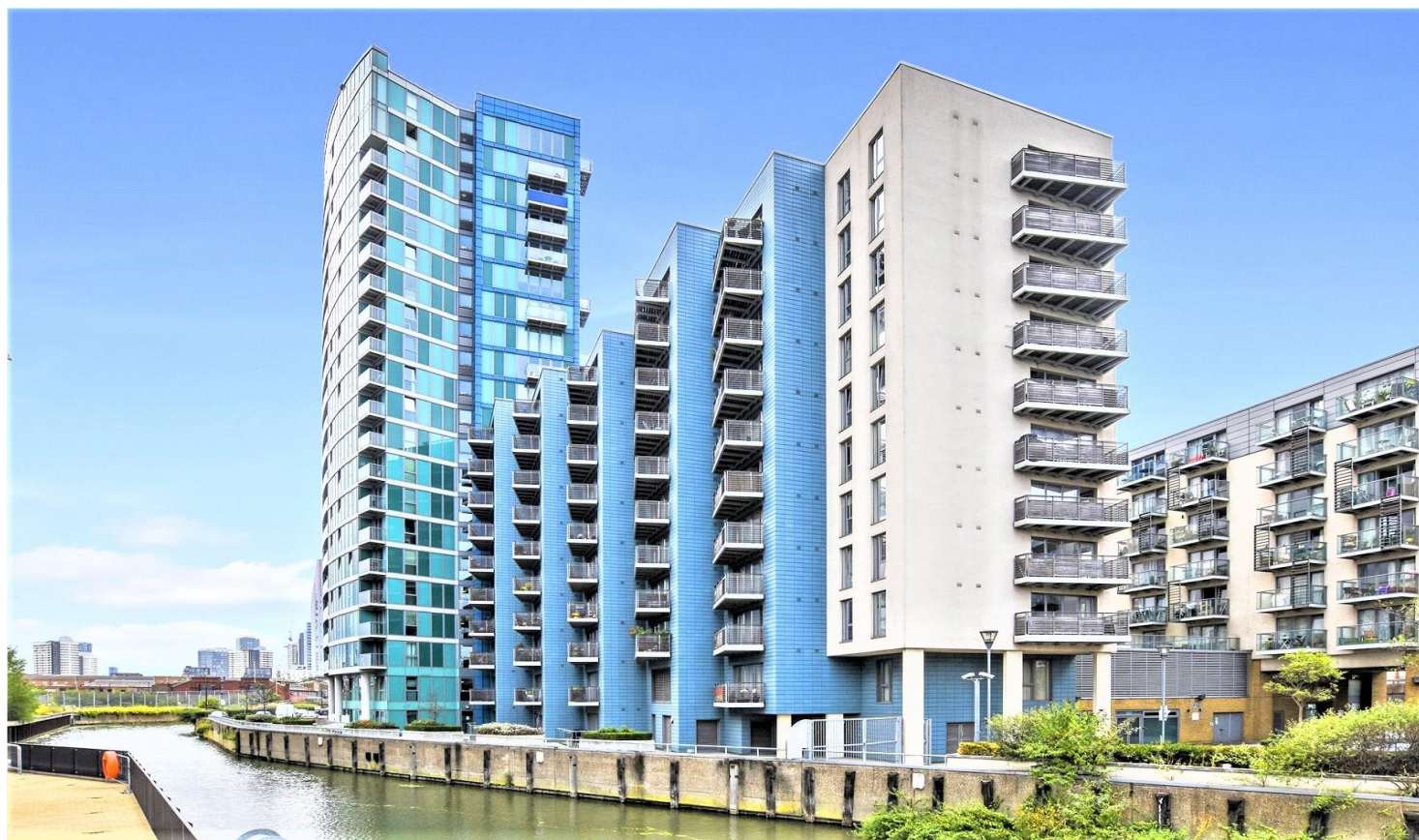
SPENCER JAMES
RESIDENTIAL

8 Hartlepool Court | London E16 2RL

T: +44 (0) 20 7474 3636

E: mail@spencer-james.co.uk

www.spencer-james.co.uk



**** Two Bedroom Apartment Two Bathroom Apartment ****

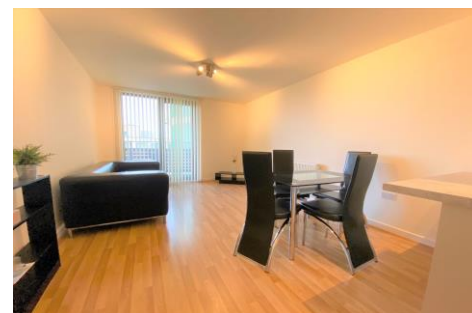
**** Available May ****

**** Offered Furnished ****

**** On-Site Concierge ****

**** EPC Rating B ****

**** Council Tax Band D ****



Thomas Frye Court, 30 High Street, London, E15

Monthly Rent Of £2,150

Available Mi May is this well presented 8th floor two bed two bathroom apartment. The property benefits from two double bedrooms, lounge diner, fitted kitchen, ample storage and balcony. The develop has onsite concierge and security.

Entrance Hall

Laminate flooring, wall mounted radiator, door to all rooms, two storage cupboards one housing hot water system

Lounge/Diner

Wall mounted radiator, laminate flooring, double glazed balcony doors to front giving access to balcony, open plan to kitchen

Kitchen

Range of eye and base level units, tiled flooring, appliances including washing machine, dishwasher, fridge freezer, oven, four ring electric hob with extractor fan over.

Bedroom One

Carpet flooring, wall mounted radiator, fitted wardrobe, double glazed balcony door to front giving access to balcony, door to en-suite

En-suite

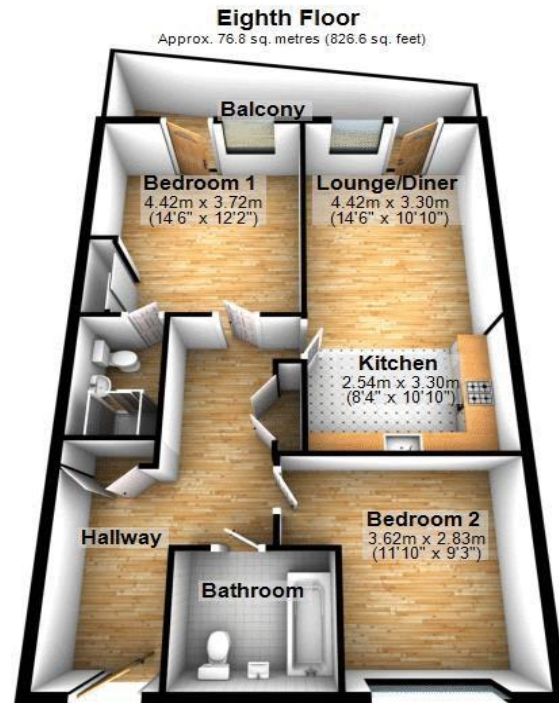
Three piece suite comprising of low level wc, wash hand basin with mixer tap over, shower cubicle, wall mounted towel rail, tiled flooring

Bedroom Two

Carpet flooring, double glazed window to rear, wall mounted radiator.

Bathroom

Three piece suite comprising of low level wc, wash hand basin with mixer tap over, bath with mixer tap over with shower head over and shower screen, wall mounted towel rail, tiled flooring



Total area: approx. 76.8 sq. metres (826.6 sq. feet)



